

What's in an E-cigarette?



E-cigarettes use a battery to heat up a special liquid into an aerosol that users inhale. It's not just harmless water vapor. The "e-juice" contains many different chemicals. When the e-liquid heats up, more toxic chemicals are formed. What researchers do know is that these toxic chemicals and metals have all been found in e-cigarettes:

Nicotine



Propylene Glycol



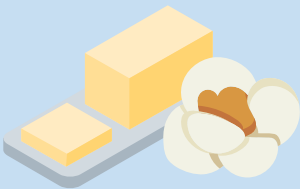
Carcinogens



Acrolein



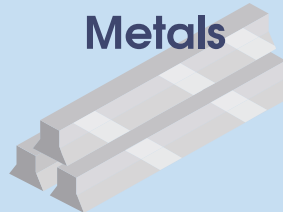
Diacetyl



Diethylene Glycol



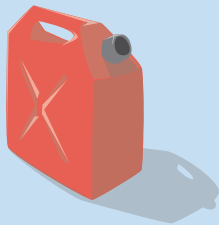
Heavy Metals



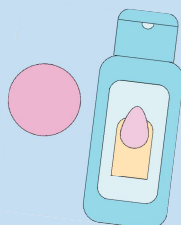
Cadmium



Benzene



Acetone



Formaldehyde



Toluene



Learn more.
tobaccofree-ri.org

TOBACCO
FREE
RHODE
ISLAND

American
Lung Association.
Rhode Island

What's in an E-cigarette?



E-cigarettes use a battery to heat up a special liquid into an aerosol that users inhale. It's not just harmless water vapor. The "e-juice" contains many different chemicals. When the e-liquid heats up, more toxic chemicals are formed. What researchers do know is that these toxic chemicals and metals have all been found in e-cigarettes:

Nicotine

a highly addictive substance that negatively affects adolescent brain development

Propylene Glycol

a common additive in food; also used to make things like antifreeze, paint solvent, and artificial smoke in fog machines

Diacetyl

a chemical linked to a lung disease called bronchiolitis obliterans aka "popcorn lung"

Diethylene Glycol

a toxic chemical used in antifreeze that is linked to lung disease

Benzene

a volatile organic compound (VOC) found in car exhaust

Acetone

a clear solvent that companies add to products such as nail polish remover.

Carcinogens

chemicals known to cause cancer, including acetaldehyde and formaldehyde

Acrolein

a herbicide primarily used to kill weeds, can cause irreversible lung damage

Formaldehyde

a chemical linked to a lung disease called bronchiolitis obliterans aka "popcorn lung"

Cadmium

a toxic metal found in traditional cigarettes that causes breathing problems and disease

Toluene

toluene may be found in paint thinners, paintbrush cleaners, nail polish, glues, inks and stain removers.

Heavy Metals

Heavy metals such as nickel, tin, lead

Learn more.
tobaccofree-ri.org

TOBACCO
FREE
RHODE
ISLAND

 American
Lung Association.
Rhode Island