

Rhode Island

SUBSTANCE ABUSE PREVENTION

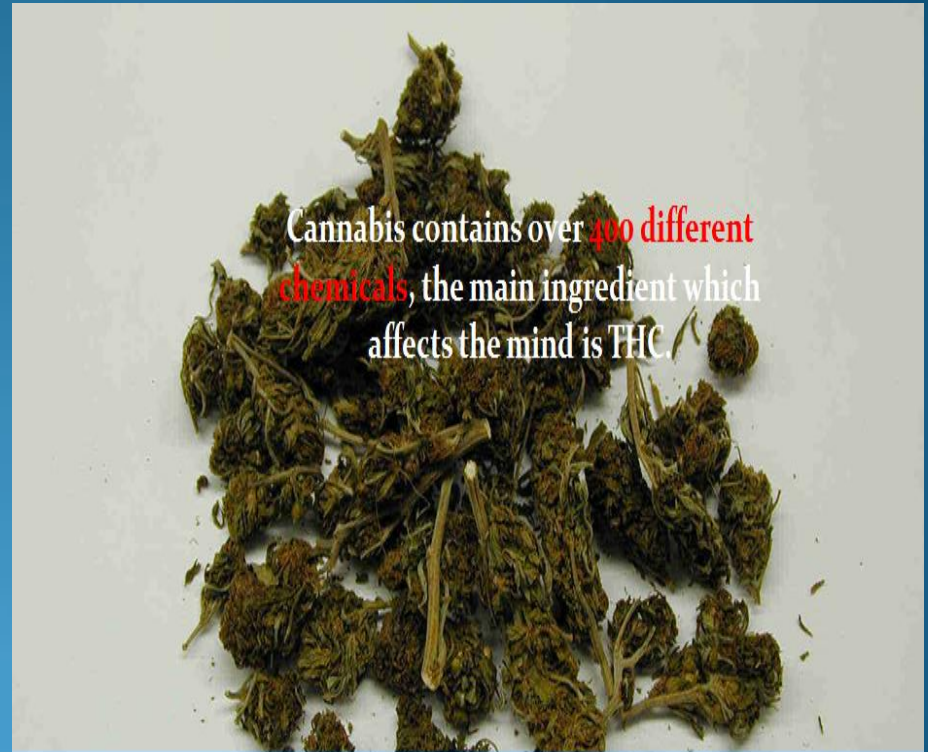
United States Attorney Peter F. Neronha



Appointed by President Obama in September of 2009

Marijuana

- Methods of extracting THC.
- The danger of butane extractions.
- How vaporizers are being used.
- Edibles.
- The effects of marijuana on teenagers.



Cannabis contains over 400 different chemicals, the main ingredient which affects the mind is THC.

Marijuana: Is a greenish-brown, (purple or gray) mixture of dried shredded leaves, stems, flowers & seeds. It contains varying degrees of THC.

MARIJUANA - CANNABIS

Marijuana comes from the Cannabis plant. (Indica & Sativa)

The THC in marijuana causes psychoactive effects by changing brain functions which result in alterations in perception, mood, or consciousness.

Marijuana Use

- Marijuana may be smoked in a rolling paper, cigar wrapper, a pipe, a bong or a vaporizer.
- Marijuana edible use has increased and can be consumed by mixing it with food, candy, or drinks. This has become more common due to the use of medical marijuana and legalization.
- Patches and tinctures.

What is in your Marijuana?

Marijuana is sometimes laced with other, more powerful drugs, such as anxiety medications, crack cocaine, synthetic drugs, or PCP (phencyclidine - a powerful hallucinogen)(pesticides).

How much THC is in your marijuana?

- 420 – is a code name for smoking marijuana.
- 710 – spells OIL backwards and is being used as a code to dab / vape marijuana oils.

Marijuana, hashish, and oils are some of the by-products of the cannabis plant.

- Hash and oils are usually made from the pure resin or crystals called trichomes collected from the flowering tops of the female cannabis plant.
- Trichomes contain higher levels of THC



Producing Hash (resinous) from marijuana

Trichomes

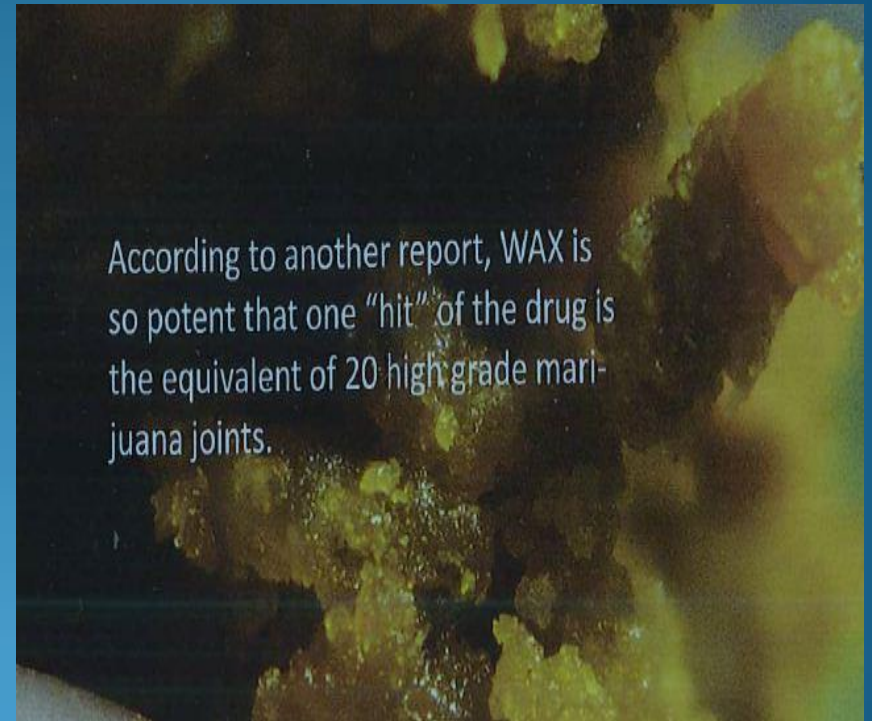


Old Extraction Method



New drug of choice!

- VAPING & DABBING usually require THC extracts made with the use of butane or other substances such as, alcohol, cold water, coconut oil, butter, etc.
- One hit is equal to 20 joints. (Reported by DEA)
- Others sources report one hit is equal to 2 joints.



Some street names of THC (concentrates) extracts used to vape or dab

“But it’s just a plant...”

(80-90% THC) Concentrates



Usually around 50 % to 80% THC

Price of THC Extracts

THC extracts contain higher levels of THC than smoking dry traditional marijuana.

- THC Extracts sell from \$40.00 to \$90.00 a gram.
- **One(1) pound (453 grams) of marijuana may yield 90 grams of THC extracts.**
- $\$40 \times 90 \text{ grams} = \$3,600.$
- $\$90 \times 90 \text{ grams} = \$8,100.$

Newest THC Extract THC-A Crystalline

Cannabis Aficionados Develop THC-A Crystalline: The Strongest Hash in the World at 99.99% THC



By [Waking Times Media](#)

Posted on October 25, 2016



While the sky-high potency may scare some away, Crystalline provides a surprisingly clean, focused, and inspired high.

Crystalline THC-A

Waking Times Media

There's a new kid on the block; her name is Crystalline, and she's from the Hash Family.

Crystalline hash is the latest craze in the hash community, and everyone wants a taste. The demand is so high that THC-A Crystalline is going for \$200 a gram in southern **California dispensaries**.

$$\text{\$200} \times 453 \text{ gr} = \text{\$90,600}$$

Testing in at an astonishing 99.9% THC, Crystalline is officially the strongest hash on the market. **Other concentrates** such as **ice hash**, **rosin**, and **BHO** range from 50-80% THC.

Guild Extracts, a Southern California Company, states it is not using solvents to create crystalline. (no by-products like butane)

Price of Dry Marijuana

Usually 10% to 25% THC



TCS OG Kush #6
(\$40.00/3.5G,
\$12.00/G)



***Special
Pricing***New
Strain***TCS Sleestack
Skunk*** (\$40.00/3.5G,
\$12.00/G)



***Columbus Day
Special Pricing***TCS
Cherry Hash Plant***
(\$9.00/G)

One gram of marijuana averages \$10.00

453 grams in one pound.

$453 \text{ grams} \times \$10.00 = \$4,530.00$ per pound

.32 grams average amount of marijuana in a joint – App. 84 joints in one ounce.

84 joints at \$5.00 a piece = \$420.

VAPORIZERS – used to smoke marijuana

Marijuana's by-products
wax, daps, oils, shatter

May contain up to 99% THC



Vaping vs Smoking

- Students believe that because you are not inhaling smoke it is safer.
- There is very little odor so it is difficult for others to detect.
- Easily concealable and requires less raw marijuana.
- Greater “high” due to higher concentrations of THC.
- Vaporizer are being produced to not look like a vaporizer.
- What will be the future effects???
 - Quality of vapors???
 - Increase in the level of THC???

Extracting THC with butane

Marijuana is placed inside a turkey baster, coffee filter attached to one end, butane canister attached to other end and dispensed



The butane extracts the THC from the marijuana



A liquid mixture of butane and THC

Intro to Butane Hash Oil

VAPING

Different types of smoking devices can be used to inhale the fumes or vapor of wax. Some of the more popular are electronic vaporizers, or pens. These devices can be used to smoke hashish, hash oil, marijuana oil, marijuana or wax and are available at most smoke shops, head and bong shops.

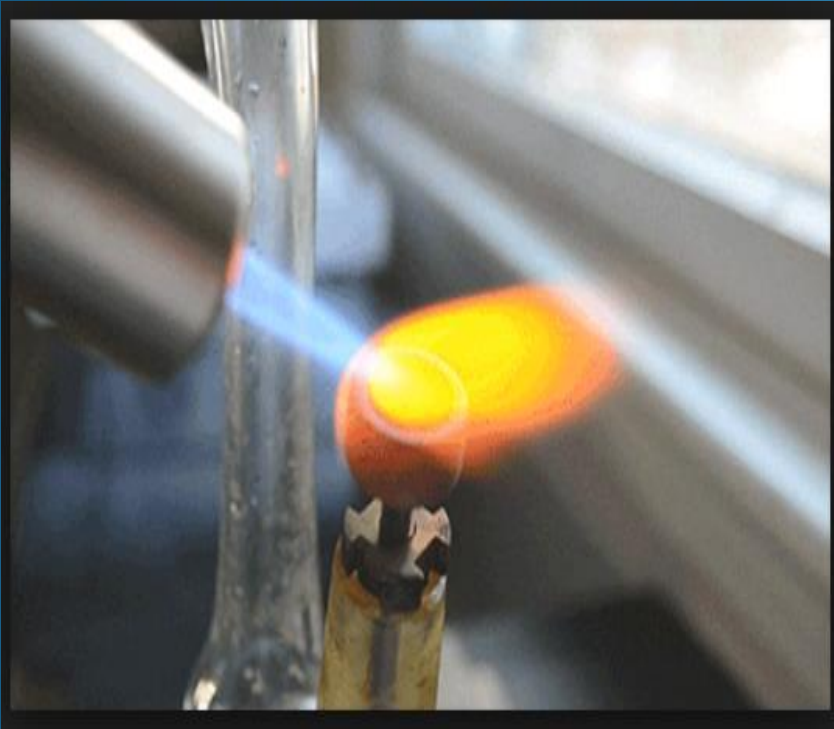
The pens are powered by a rechargeable battery. Just press the button, an indicator light comes on to inform you that your wax, oil or whatever you are using is heating up.



Wax

It is reported that DEA agents have seen users suffer the onset of psychosis and possibly brain damage as a result of the exposure to high concentrations of THC.

Dabbing – excessive heat provides for a greater amount of product



Pastry torch





RI Seized - Butane Extraction System

Butane THC Extraction

- Butane used to extract THC from marijuana can be extremely dangerous.
- The state of Colorado has had a 167% increase in butane hash oil explosions.
- In 2015, the State of RI had four fires/explosions;
 - Providence mill fire, South Kingstown house fire (1 death), West Warwick and Westerly – condo fire.
- DEA reports 30 similar fires/explosions across 6 New England states during the past 16 months. (2014 – 2015)
- In 2014, there were hundreds of BHO fires nationwide.
- The District of RI, US Atty's Office has indicted subjects responsible for the dangerous production of BHOs.

Production of Shatter, Brittle.

Shatter, brittle Production

Hash in small screen bag



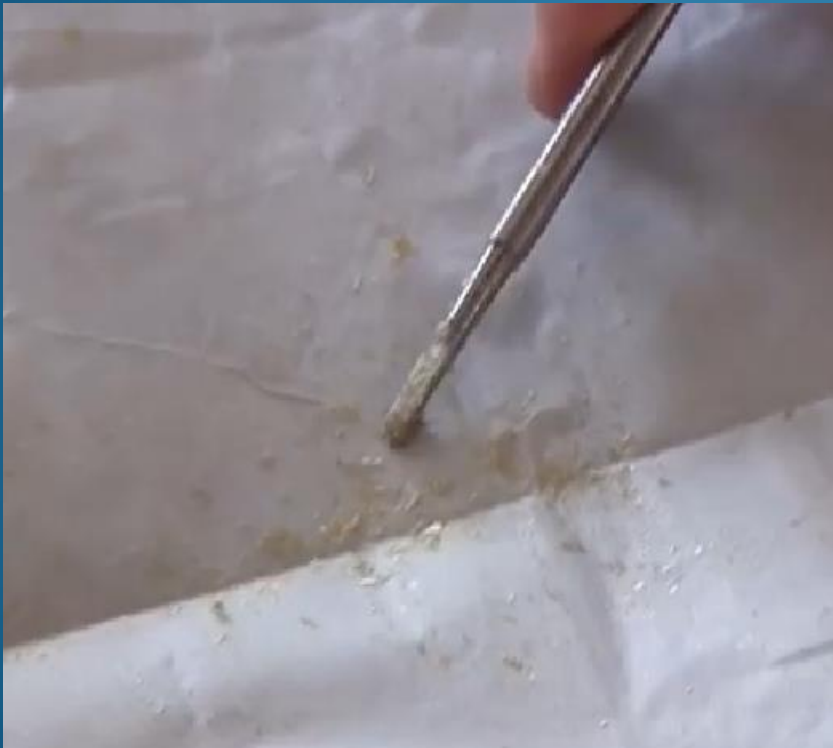
Parchment paper and hair straightener



Shatter, brittle production

Scrapping from paper

End result – hence name



Shatter

Collected from Parchment
paper

Ready to be smoked



Dabber



Edibles

Marijuana Edibles - dangerous

MARIJUANA EDIBLES POSE A PUBLIC HEALTH RISK

Edibles often contain 3-20 times the THC concentration recommended for intoxication.

There have been at least **3** deaths related to marijuana edibles in 2014.



Colorado limits a standard serving size of edibles to 10 mg of THC, and limits a package to 10 servings. (100 mg of THC)

Marijuana / Cannabutter

Marijuana



Marijuana in cheesecloth



Marijuana / Cannabutter

- Butter



- Water added to the



Marijuana / Cannabutter

**Marijuana cooking in
butter or coconut oil**

**Refrigerate and then release
water from butter**



Pot Brownies – danger!



It takes 30 to 90 minutes to feel the affects of edible THC

Why edibles are dangerous

- It is difficult to regulate the amount of THC in an edible.
- The absorption time is greater than smoking so the user becomes impatient and ingest more than is required.
- The body processes marijuana that has been smoked differently than marijuana that has been eaten.

Edibles vs Smoking

- Edibles get digested and metabolized in the liver and change the 9-THC to a more potent form of 11-THC. Edibles usually provide more of a psychedelic effect and the high may last from 4 to 10 hours. The effects are felt within 45 minutes to 120 minutes. (30 to 90 minutes)
- Smoking marijuana bypasses the liver initially and goes directly from the lungs to the brain. The effects are felt within minutes and do not last as long. (45 min to 3 hours)
- (*Understanding Marijuana* author Mitch Earleywine, a professor of psychology at the State University of New York at Albany)

New – Magical Butter

No smell

Just add the ingredients



How to Make MagicalButter - Magicalbutter.com



Cost \$175.00

Strainer and final THC butter



How to Make MagicalButter - Magicalbutter.com



Signs of marijuana use

- Bloodshot eyes and dilated pupils – visine or eye drops
- Odor – cigars, incense, air fresheners
- Hand and eyelid tremors
- Dry mouth
- Increase heart rate and Lower blood pressure
- Confusion – difficulty with problem solving
- Dizziness
- Distorted time
- Some users may become temporarily incapacitated

National Institute on Drug Abuse (NIDA)

- Marijuana also affects brain development. When people begin using as teenagers, marijuana may reduce thinking, memory, and learning functions and how the brain builds these connections.
- <https://www.drugabuse.gov>

Short Term Effects of Marijuana

Marijuana use by youths, 12 to 18 years old, has resulted in the number one reason for visits to the emergency room. (2014 in RI)

Adverse Consequences of Marijuana Use

Acute (present during intoxication)

- Impaired short-term memory
- Impaired attention, judgment, and other cognitive functions
- Impaired coordination and balance
- Increased heart rate
- Anxiety, paranoia
- Psychosis (uncommon)



How Does Marijuana Affect a User's Life?

Compared to nonusers, heavy marijuana users more often report the following:

- lower life satisfaction
- poorer mental health
- poorer physical health
- more relationship problems

Users also report less academic and career success. For example, marijuana use is linked to a higher likelihood of dropping out of school (McCaffrey, 2010). It is also linked to more job absences, accidents, and injuries (Zwerling, 1990).

Effects of Marijuana on Performance

- Impairs skills requiring eye-hand coordination and a fast reaction time
- Reduces motor coordination, tracking ability and perceptual accuracy
- Impairs concentration, and time appears to move more slowly
- Skill impairment may last up to 24 to 36 hours after usage
- Reduces maximal exercise capacity resulting in increased fatiguability
- Marijuana has no performance-enhancing potential

Because marijuana is stored in the body fat, its effects may be long-lasting. "It has been shown that performance skills can be impaired for as long as 24 hours after marijuana usage," says Wadler, "which casts doubt on the

Dr. Gary Wadler, a New York University School of Medicine professor and lead author of the book "Drugs and the Athlete",

Help keep marijuana from our children.



Informational websites

- NIDA.gov
- SAMHSA.gov
- Drugabuse.gov
- Drugfreeworld.org
- PhD Bertha Madras, Department of Psychiatry at McLean Hospital
- Streetdrugs.org
- Thecannabis.com
- Mayoclinic.org
- OJJDP.gov

State of Rhode Island

- United States Attorney Peter Neronha
- United States Attorney's Office, District of Rhode Island
 - Investigator David Neill
 - United States Attorney's Office
 - Coordinator Heidi Driscoll
- South Kingstown Partnership for Prevention,