



MAYOR BRETT P. SMILEY
CITY OF PROVIDENCE

PROXIMITY OF PUBLIC SCHOOLS TO CIGARETTE/ENDS RETAILERS, 2023

Healthy Communities Office

Rachel Ferrara, MSW & Tanya Gilbert, MBA

March 2, 2023





MAYOR BRETT P. SMILEY
CITY OF PROVIDENCE

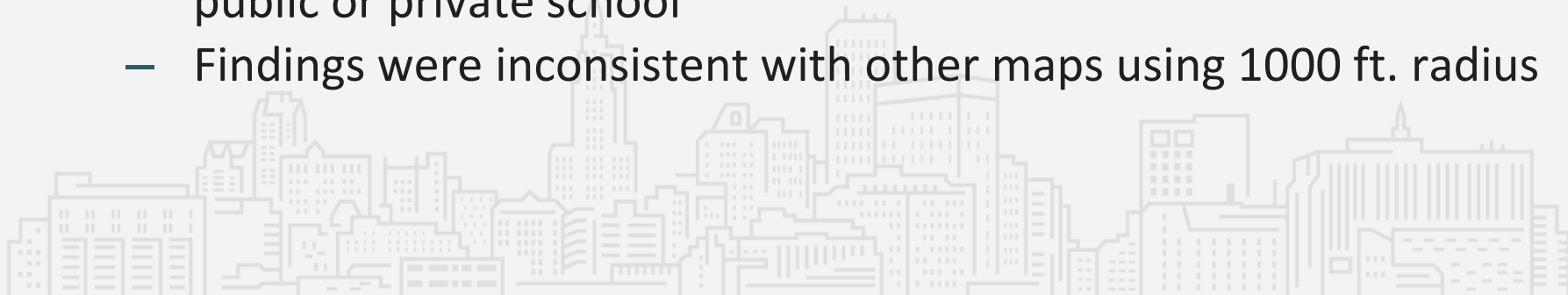
Background

Section 01



Initial Findings

- Initial request, cigarette/ENDS retailers within 500 ft. of a public school
 - 2.98% (9) of cigarette/ENDS retailers are within 500 ft. of a public school
 - 9.93% (30) of cigarette/ENDS retailers are within 500 ft. of a public or private school
- Moved radius out to 1000 ft based on similar maps
 - 14.9% (45) of cigarette/ENDS retailers are within 1000 ft. of a public school
 - 36.75% (111) of cigarette/ENDS retailers are within 1000 ft. of a public or private school
 - Findings were inconsistent with other maps using 1000 ft. radius

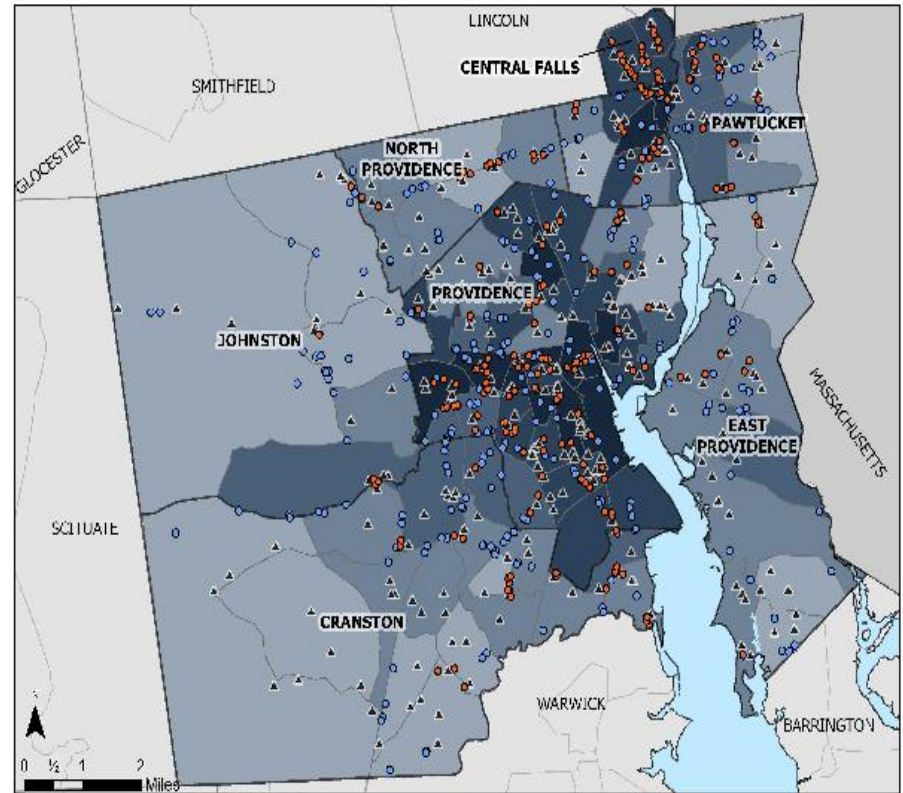


Proximity of Tobacco Retailers to Schools, Rhode Island, 2019



Tobacco point-of-sale advertising plays a significant role in youth perception of tobacco products. Evidence shows that the prevalence of youth smoking increases with an increase in the number of tobacco retailers that are within walking distance of the school.

Overall, out of 476 total licensed tobacco and/or electronic nicotine delivery systems (ENDS) retailers in the municipalities surrounding Providence, Rhode Island, 43% fell within 1,000 feet of a school. However, some municipalities, especially those with high poverty census tracts, have a higher percent of tobacco and/or ENDS retailers that are within walking distance to schools. The map below illustrates that there is a greater density of tobacco and/or ENDS retailers in census tracts with higher poverty levels.



Sources:
 Rhode Island Department of Taxation (2019),
 Rhode Island Department of Health (2019),
 Rhode Island Department of Education (2019),
 2013-2017 Census American Community Survey

Percent of Retailers within 1,000ft of a School, by Municipality

Central Falls:	100%
Providence:	49%
Pawtucket:	17%
North Providence:	43%
Cranston:	32%
East Providence:	27%
Johnston:	10%

Legend

Percent Below Poverty



Tobacco and/or ENDS Retailers

Schools

Providence City Municipalities

Connecticut

Central Falls

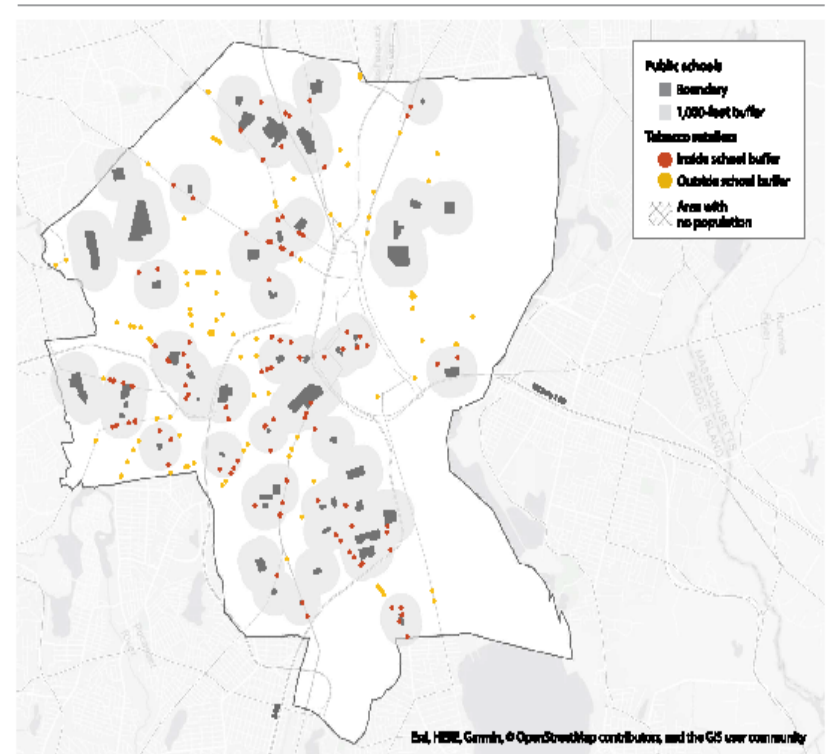
RIDOH Map

- 49% of retailers within 1000 ft. of a school
- Data from 2019
- Unclear on criteria used for school
 - Based on location & quantity it appears to include private schools and any Pre-K

ASPiRE Map

- 53.8% of retailers are within 1000 ft. of a school
- 80.3% of public schools are with 1000 ft. of a tobacco retailer
- Data from 2019
 - 103 less retailers
- Unclear on criteria used for schools
 - Based on locations, some closed schools are counted and URI

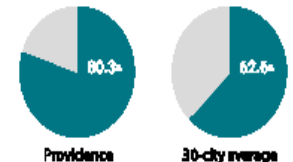
Tobacco Retailers & Schools in Providence



The Providence map illustrates that:

- ▶ 80.3% of public schools are within 1,000 ft of a tobacco retailer
- ▶ 53.8% of tobacco retailers are within 1,000 ft of a school

Providence has more schools near tobacco retailers than the 30-city average



About these data: Tobacco retailers identified from a local Planning for City of Providence Board of Licenses, Aug. 2019. McDonald's and Starbucks obtained from AggData 2020. City block length assumed to be 200 feet (<https://www.govopen.com/2019/08/14/the-variety-of-american-grids/>). For census tracts, land area and roadway miles were obtained from THESELine (Spatially linked line-referenced data first prepared by the U.S. Census Bureau 2013 (<https://www.census.gov/geography/tables/census-tracts/population-and-median-household-income-from-american-community-survey-2013>)). School boundaries data were created by Geovivis Networks. GIS projects NCAL used the geocoding and map suggestion software: Tobacco Retailer Density Field Sheet for Providence, RI (May, 2020). Advancing Science & Practice in the Retail Environment (ASPiRE, aspirecenter.org) is funded by the National Cancer Institute (P01-CA22826).

One in six US adults lives in one of the 30 ASPiRE Community Advisory Board (CAB) cities. The cities vary with respect to state/local tobacco control policies and regions. Products like this provide the 30 cities with readily usable snapshots of information on the consumer and built environments for tobacco in their cities and in comparison to the other cities. CAB representatives can use these products in communications with staff, policymakers, and other stakeholders.



Advancing Science & Practice in the Retail Environment

aspirecenter.org



MAYOR BRETT P. SMILEY
CITY OF PROVIDENCE

Current Findings

Section 02



Providence Quick Facts

- Public Schools: 42
- Cigarette/ENDS retailers: 302
- Neighborhoods: 25
- Pop. in Poverty: 26.10%
- Median Household Income: \$49, 065
- Pop. of Color (incl. Hispanic of any race): 66.00%



Quarter Mile Radius Rationale

- Used a .25 mile radius based on D.C. ACT 24 -122
 - “prohibit the sale and distribution of flavored tobacco products, prohibit the sale and distribution of electronic smoking devices within one quarter mile of a middle school or high school, exempt certain hookah bars from the prohibitions contained in the bill”



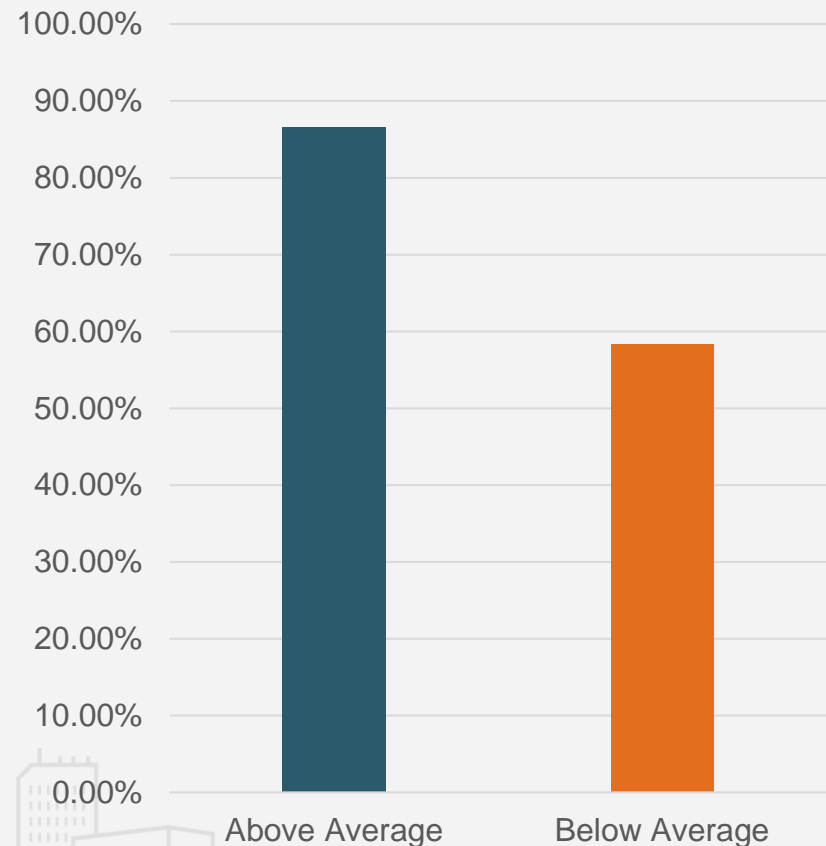
Retailer Proximity to Providence Public Schools

- **78.57% of Public Schools** are within .25 miles of a cigarette/ENDS retailer
 - 26.49% of cigarette/ENDS retailers are within .25 miles of a public school
- **61.11% of Middle and Senior High Schools** are within .25 miles of a cigarette/ENDS retailer
- **2.40 is the average number of cigarette/ENDS retailers** within .25 miles of a public school



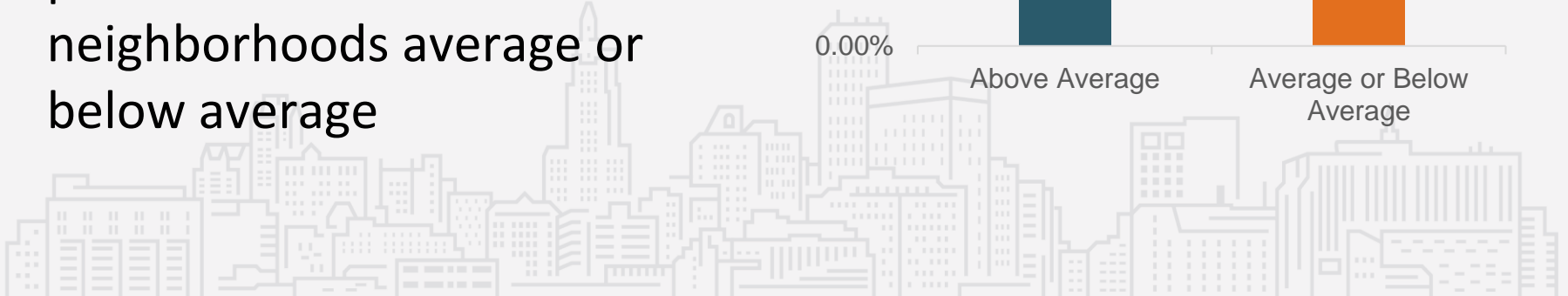
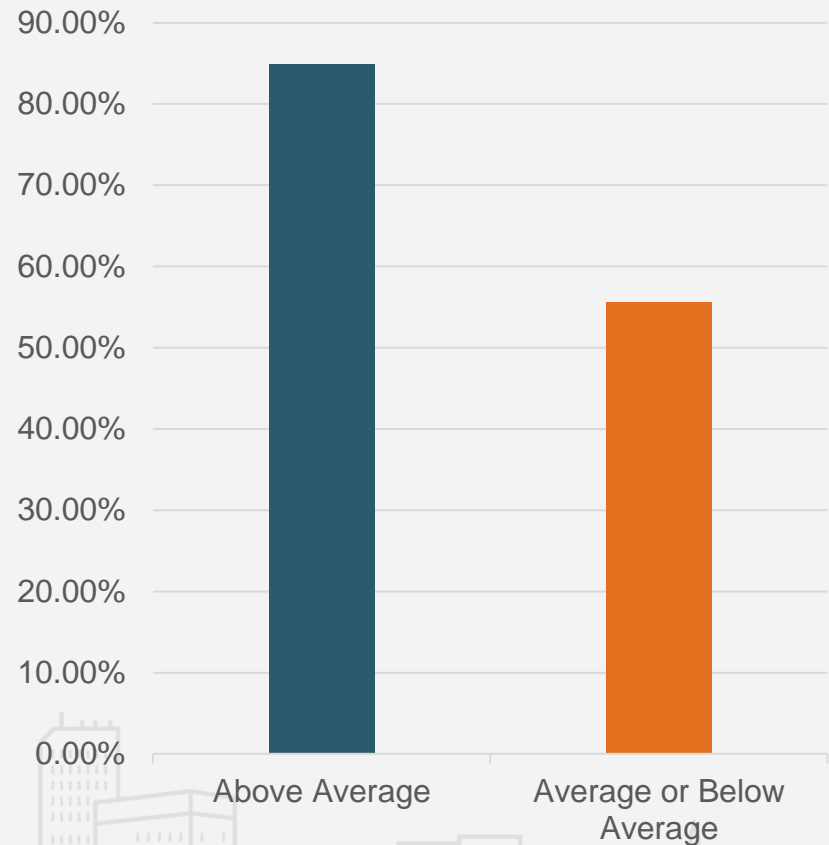
Schools in Neighborhoods with Above Average Poverty are More Likely to be Near a Cigarette/ENDS Retailer

- **86.66% of public schools located in a neighborhood with an above average poverty rate are within .25 miles of a cigarette/ENDS dealer**
- **Compared to 58.33% of public schools in neighborhoods average or below average**



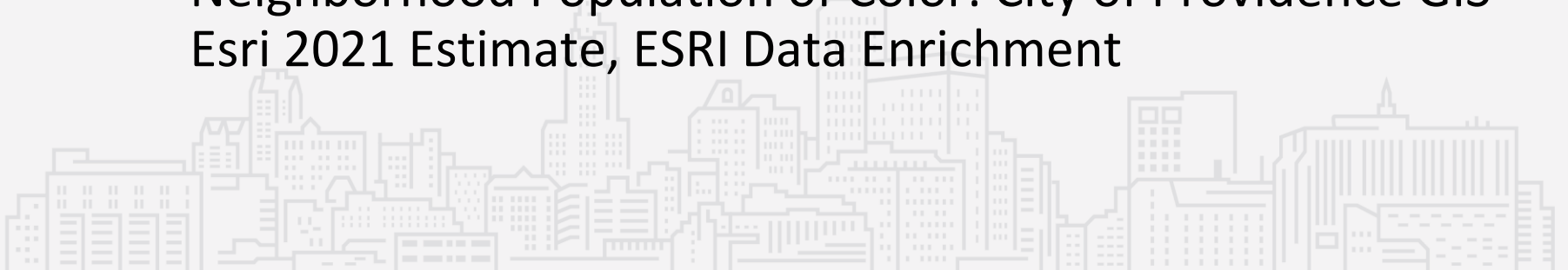
Schools in Neighborhoods with Above Average Population of Color are More Likely to be Near a Cigarette/ENDS Retailer

- **84.85% of public schools located in a neighborhood with an above average population of color are within .25 miles of a cigarette/ENDS retailers**
- **Compared to 55.56% of public schools located in a neighborhoods average or below average**



Data Used

- Cigarette Dealers: RI Department of Taxation (2023)
- ENDS Dealers: RI Department of Health Licensing Unit (2023)
- City of Providence GIS -
<https://pvdgis.maps.arcgis.com/home/index.html>
 - Providence Public Schools: City of Providence GIS (2023)
 - Neighborhood Poverty Level: City of Providence GIS-2019 ACS 5-Yr Estimate, ESRI Data Enrichment
 - Neighborhood Median Household Income: City of Providence GIS - Esri 2021 Estimate, ESRI Data Enrichment
 - Neighborhood Population of Color: City of Providence GIS - Esri 2021 Estimate, ESRI Data Enrichment



References

- Morgan Orr, Rhode Island Department of Health. Accessed from the Centers for Disease Control and Prevention's Chronic Disease GIS Exchange
<https://www.cdc.gov/dhdsp/maps/gisx/mapgallery/RI-tobacco-retailer.html>
- Tobacco Retailer Density Fact Sheet for Providence , RI (May, 2020). Advancing Science & Practice in the Retail Environment (ASPIRE, aspirecenter.org) is funded by the National Cancer Institute #P01-CA225597.
- Act 24-122, Flavored Tobacco Product Prohibition Amendment Act of 2021 (B24-20)



THANK YOU

City of Providence

